

Lillington Nursery and Primary School



Head Teacher to Home—9th December What has happened in school this week?

Welcome to our weekly newsletter.

This week has certainly been an interesting one. We had a visit on Monday from the Trust who have recognised the significant improvements we continue to make in our journey to ‘Good’.

As you are aware across the country there has been a rise in cases of Scarlet fever. I have today sent out a letter with symptoms to look out for as we have now had 2 confirmed cases at Lillington. As a school we are following all the guidance sent to use through Warwickshire County Council and public health.

Next week is the last week of the Autumn Term, I can’t believe we are already at Christmas, doesn’t time fly when you are having fun! The week ahead will of course be a very busy one, with the Christmas Fair this afternoon after school, Lower school nativity and Christmas dinner day all happening next week.

Don’t forget that next Thursday (15th) is our Christmas jumper day, I look forward to seeing the variety of designs from both the children and the adults.

Have a lovely weekend!

Lillington Nursery and Primary School



Head Teacher to Home—9th December What has happened in school this week?

In the two-year-old Nursery, we have been working on our hand-eye coordination to thread.



Lillington Nursery and Primary School



Head Teacher to Home—9th December What has happened in school this week?

Nursery have been practicing their shape recognition this week.

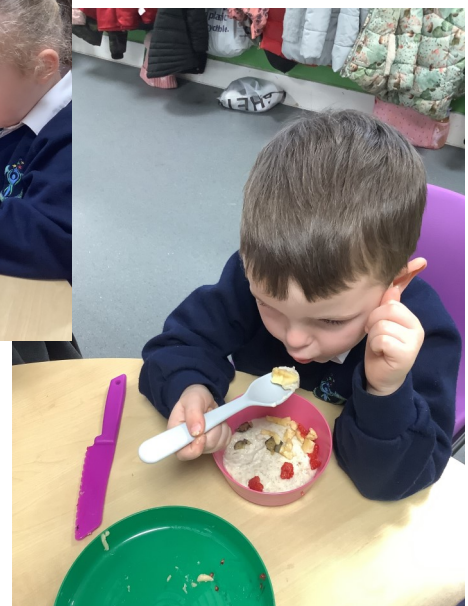
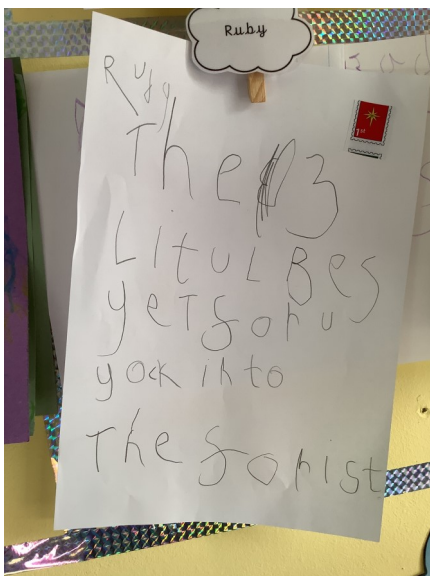
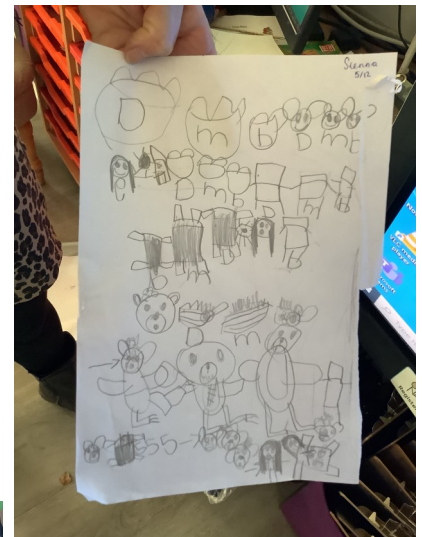
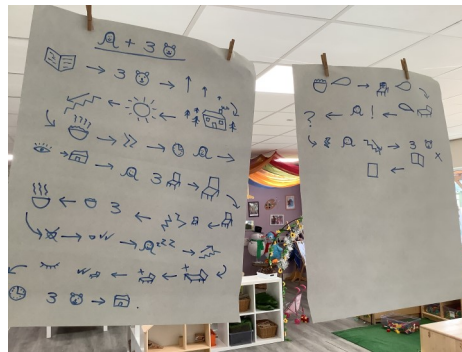


Lillington Nursery and Primary School



Head Teacher to Home—9th December What has happened in school this week?

This week Reception have been learning the story of Goldilocks and the Three Bears. They have enjoyed learning their first text map and one of the children drew their own. One of the others even had a go at writing the story!! Hard to believe they have only been at school for a term. They all had a go at making porridge and chopping up some fruit to add to it. Most of them ate it all up just like Goldilocks.



Lillington Nursery and Primary School



Head Teacher to Home—9th December
What has happened in school this week?



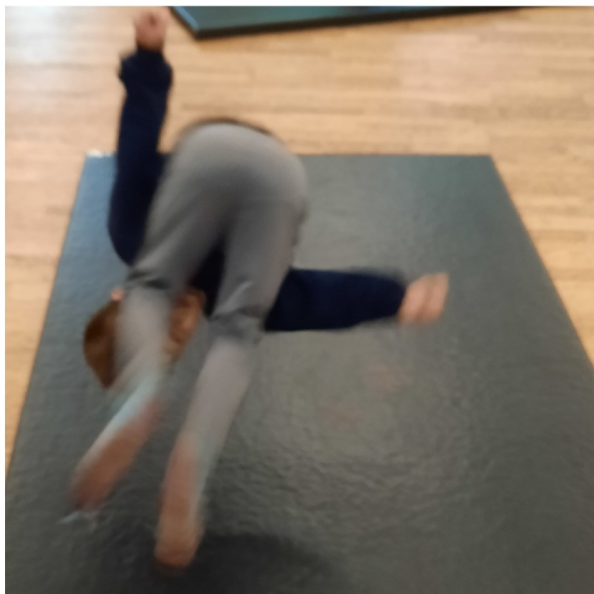
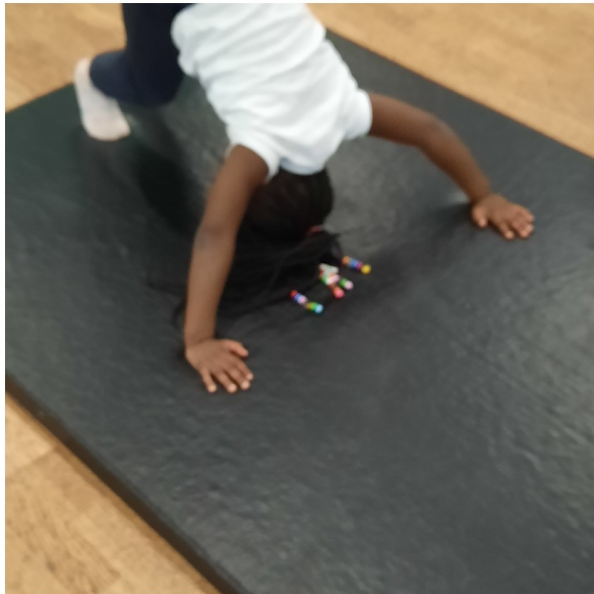
Darwin have been learning about the human senses and identifying the body parts for each sense. As part of this the children explored their sense of smell by trying to identify different scents and their sense of taste to explore different flavours.

Lillington Nursery and Primary School



Head Teacher to Home—9th December What has happened in school this week?

Children in Peake Class have shown great resilience and determination during their gymnastic sessions this half term. We have practised headstands, flips, and cartwheels!



PIC•COLLAGE

Lillington Nursery and Primary School



Head Teacher to Home - 9th December What has happened in school this week?

Last Friday, Drew class received a special visit. They learned all about the straight-tusked elephant before being faced with a fragment of its tusk, and even a tooth! They were amazed at just how old it was. They also enjoyed pretending to be a hunter-gatherer with a replica of the Heidelberg Man's hand-axe. They would like to give a big thanks to Lucy for a fascinating visit!



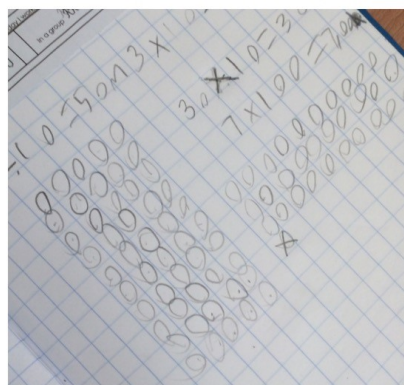
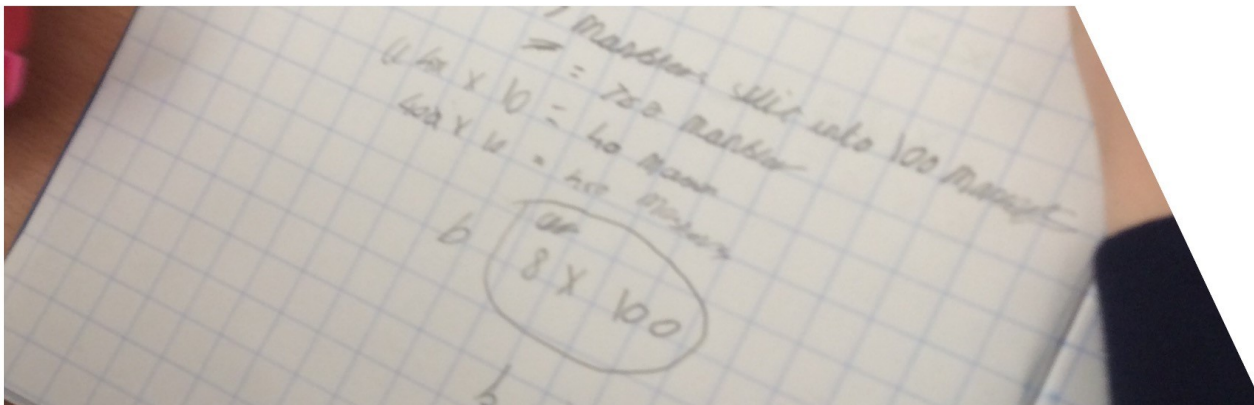
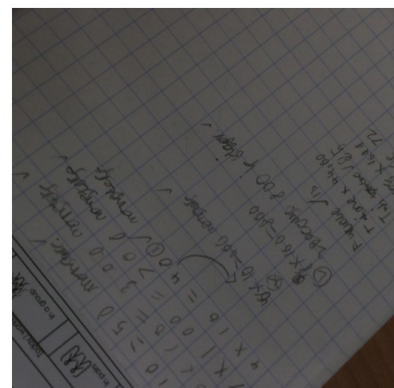
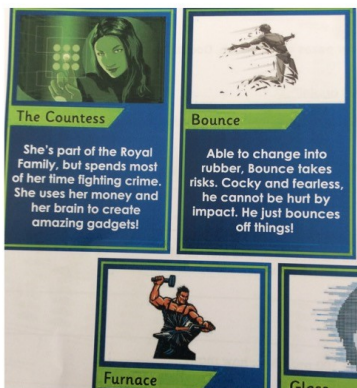
PIC•COLLAGE

Lillington Nursery and Primary School



Head Teacher to Home - 9th December What has happened in school this week?

Year 4 read a story that involved us solving lots of maths problems to consolidate our multiplication and division work over the half term.



PIC•COLLAGE

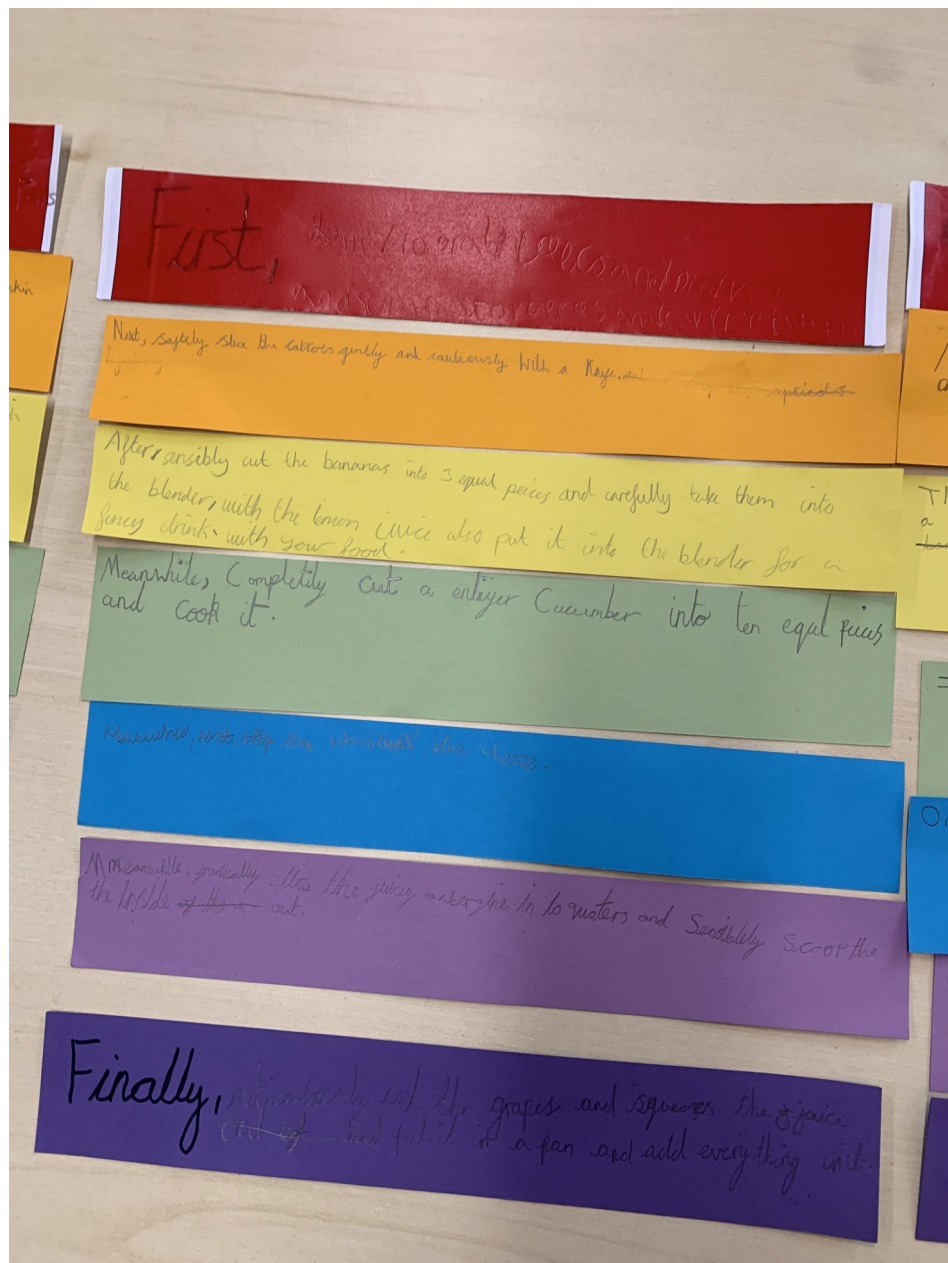
Lillington Nursery and Primary School



Head Teacher to Home - 9th December

What has happened in school this week?

Pankhurst have had a good week getting to grips with our new text type. They have written some brilliant instructions about how to cook a rainbow and are now writing about how to care for a pet dragon.

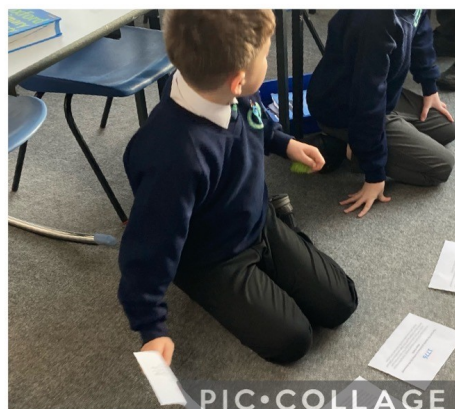
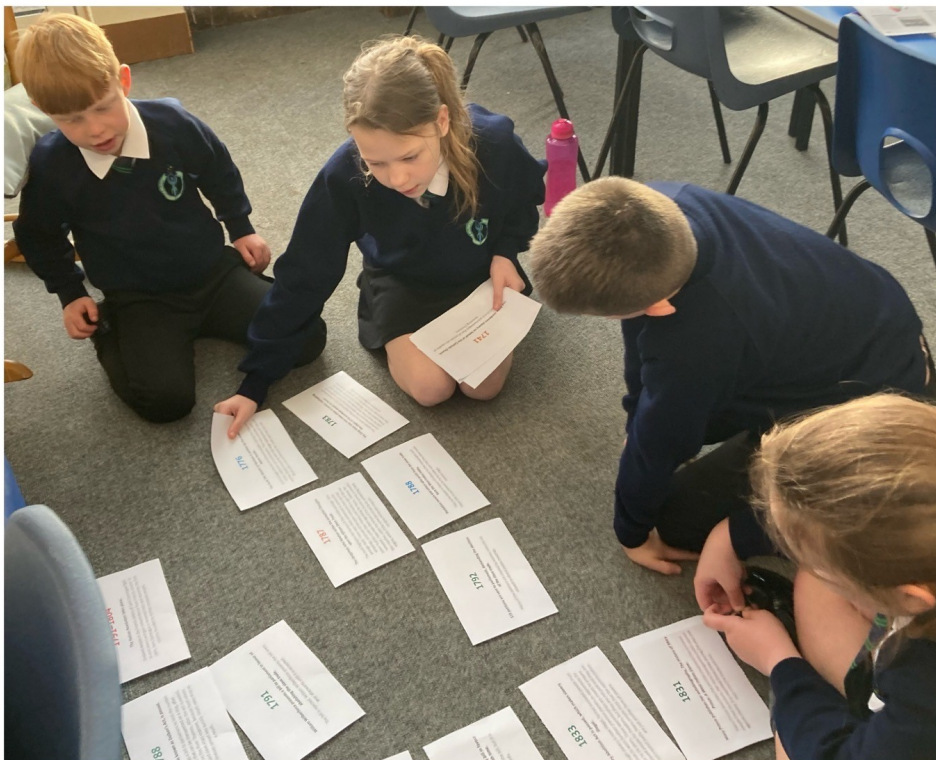


Lillington Nursery and Primary School



Head Teacher to Home - 9th December What has happened in school this week?

This week in History, the children in Angelou have been deepening their knowledge of the events and actions which led to the abolition of the slave trade. They used excellent research and organisational skills to generate accurate timelines and answer a range of challenging enquiry questions.



PIC•COLLAGE

Lillington Nursery and Primary School



Head Teacher to Home - 9th December What has happened in school this week?

In King Class this week the children have had a big focus on geography. They have learnt about the Earth's key geographical features, the Prime Meridian and lines of latitude and longitude. They have also been looking at maps and considering the scale of different maps. Here are some examples of their learning.

Key	Definition
equator	The equator is the line of latitude around the middle of Earth. It is equidistant from the North Pole and South Pole.
lines of latitude	They are imaginary lines around the world. They are measured in degrees to help us pinpoint a location.
lines of longitude	They run vertically. They also measure how far north or south a point is from the equator.
Prime Meridian	The world is split into 24 meridians because there are 24 hours in a day. Prime Meridian = 0°
Tropic of Cancer	The Tropic of Cancer is 23.5°N.
Tropic of Capricorn	The Tropic of Capricorn is 23.5°S of the equator. The area in between these lines of latitude is called the tropics.
Arctic Circle	The Arctic Circle is a line of latitude that is 66.5°N of the equator.



Small Scale Maps:

Small scale maps have larger numbers in their scale ratio. So on this map, 1cm = 250km.

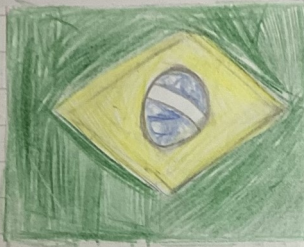
Small scale maps show continents or larger areas of land or sea and contain little detail.

Large Scale Maps:

Larger scaled maps have smaller numbers in the scale ratio. This map has a scale ratio of 1cm = 1.25km.


Large scale maps show smaller areas of land and include much more detail and the location and names of cities, towns and villages. A lot of human and physical features.





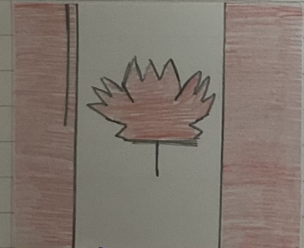
Brasilia, Brazil

15°S 50°W



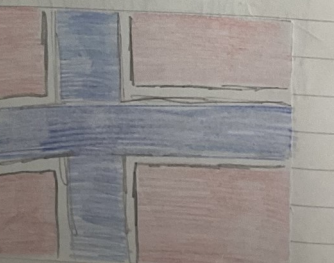
Quito, Ecuador

0° 80°W



Ottawa, Canada

45°N 75°W



Oslo, Norway

60°N 10°E

Lillington Nursery and Primary School



Head Teacher to Home - 9th December
What has happened in school this week?

Reading Workshops
Thursday 5 January 2023
3:30 – 4:30



**Come into school to see reading in action at
Lillington.**

Classrooms will have a series of
activities to show you what we do and how
you can help with reading at home.

Mr Fortune & Mrs Radcliffe will be doing short presentations
for Upper School and Lower School respectively.

Lillington Nursery and Primary School



Head Teacher to Home - 9th December
What has happened in school this week?

<u>DATE</u>	<u>EVENT</u>
FRIDAY 9TH DECEMBER	PTFA CHRISTMAS FAIR
MONDAY 12TH DECEMBER TUESDAY 13TH DECEMBER	EYFS/KS1 CHRISTMAS PLAY
THURSDAY 15TH DECEMBER	CHRISTMAS JUMPER DAY CHRISTMAS DINNER
FRIDAY 16TH DECEMBER	LAST DAY OF TERM
WEDNESDAY 4TH JANUARY	RETURN TO SCHOOL

Lillington Nursery and Primary School



Head Teacher to Home - 9th December What has happened in school this week?

Lunch Menu

Educaterers Lunch Menu Week 3

Coventry and Warwickshire: 19/9, 10/10, 31/10, 21/11, 12/12, 2/1/23, 23/1, 13/2, 6/3.
Leicestershire: 29/8, 19/9, 10/10, 31/10, 21/11, 12/12, 2/1/23, 23/1, 13/2, 6/3.
Oxfordshire: 19/9, 10/10, 31/10, 21/11, 12/12, 2/1/23, 23/1, 6/3.

Meat Free Monday



Cheese and Tomato Pizza D.G.

or



(v) Veg Korma M.D.E.

or



(v) Cheese/Beans D.

or



(v) Cheddar Cheese G.D.

Tuesday



Pork Sausages G.SU.

or



(vg) Chinese Style Plant Based "Meat" balls
Noodles contain Gluten

or



(v) Cheese D.

or



British Roast Chicken G.

Wednesday



Roast Beef in Gravy, York Pud D.E.G

or



(vg) Quorn Roast G.
(v)Yorkshire Pudding D.E.G

or



Tuna Mayonnaise F.E.

or



Tuna Mayonnaise F.E.G

Thursday



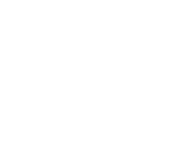
Chicken Fajita Wrap G.

or



(v) Mac 'n' Cheese G.D.

or



British Ham G.

Friday



Breaded Fish Fillet Fingers F.

or



(vg) Breaded Vegetable Fingers G.

or



Egg Mayonnaise G.E.

Week 3 Dessert Menu

Every day we offer:

(v) Yoghurt, (D.)
or fresh fruit as alternative dessert options

Monday

(vg) Homemade Chocolate Cracknel

Tuesday

(v) Chocolate or Strawberry Swirl Mousse D.
(vg) Homemade Fruity Flapjack G.

Wednesday

(v) Homemade Iced Sponge
with Sprinkles G.E. and Custard D.

Thursday

Jelly with Fruit
(vg) Homemade Carrot and
Orange Cookie G.

Friday

(v) Cheddar Cheese, Crackers and Apple
Slices G.D
(v) Ice Cream Tub D.

All our meals include a carbohydrate accompaniment, seasonal vegetables and/or salad. We offer a choice of fruit juice cordial, semi skimmed milk or water to drink. Some schools offer a Hydration Station instead, comprising of unlimited chilled water flavoured with fresh fruit.

Accompaniments may vary to those shown.

PLEASE NOTE some schools serve the cold option in a deli bag with vegetable sticks or salad, a dessert and a drink

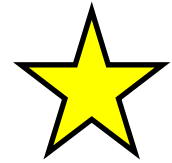
Key

vg = vegan
V = vegetarian
D = Dairy
N = Coconut /Nuts
S = Sesame
E = Egg
G = Gluten/Wheat
F = Fish
M = Mustard
SB = Soya
SU = Sulphites

Lillington Nursery and Primary School



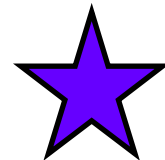
Head Teacher to Home - 9th December
What has happened in school this week?



CELEBRATION!



Congratulations to Bevan class who had the highest attendance in Key Stage 1 this week!



Congratulations to Hopper Class who had the highest attendance in Key Stage 2 this week!



Lillington Nursery and Primary School



Lillington Nursery and Primary School



After School Carols!
Tuesday 13th December 4pm

St Mary Magdalene's
Church, Lillington

Come and enjoy singing carols together
and explore our Christmas Trail

Hot chocolate to keep us warm!

Find us on Facebook: Lillington Parish Church



Come and explore the
Christmas Trail at St Mary
Magdalene's, Lillington.

**Sunday 4th December
onwards**

Follow the trail around the
churchyard as the Christmas story
unfolds in pictures, words and
plenty of fairy lights!

Find us on Facebook: Lillington Parish Church

Come and celebrate Christmas
with us at St Mary Magdalene's
Church, Lillington

Sunday 4th December onwards

Come and visit our Christmas Trail.
Follow the trail through the churchyard to discover
the Christmas story!

Tuesday 13th December

4pm Family carols around the Christmas Tree

Sunday 18th December

11:15am Nativity Service for all ages
6pm Carols by Candlelight (traditional nine lessons
and carols)

Christmas Eve

Christingle Services for all the family.
2.00pm in church - no booking required
3:30pm in church - please book online via
Eventbrite (search Lillington Christingle)
5.00pm OUTSIDE - no booking required
6:30pm in church - no booking required

Midnight Mass

11:30pm Holy Communion

Christmas Day

10:00am All Age Service

Find us on Facebook: Lillington Parish Church

Lillington Nursery and Primary School

BRUNSWICK HUB'S TURKEY BATCH DAY

TUESDAY 20TH DECEMBER

 11AM-3PM

(TURKEY BATCHES AVAILABLE 12-2PM)

Come join us at the Hub for our annual Christmas celebrations—Festive fun for the family!

Free Turkey
Batches
(with all the trimmings)

Kids Craft
& Activities

Table-top Sale
of pre-loved toys
& gifts

Tombola
& Raffle

Free Kids'
Hot Chocolate

And more...

**On the day, we will be raising money for
Brunswick Hub's Hardship fund.**



98-100 Shrubland Street, Leamington Spa

Turkey Batches will be first come, first serve—
If you want to reserve yours to avoid missing out,
call 01926 422123.