

Lillington Nursery and Primary School



Head Teacher to Home - 5 May What has happened in school this week?

Thank you to all our families who have contributed very generously to the children's coronation celebrations this week. Cakes and treats galore and also for taking the time out of your busy day to share in the excitement with your children. These events are only possible with our collective effort and we are truly grateful for your support.

We have been delighted by our pupils this week and the efforts they have been applying to their class lessons and individual learning. Some of the highlights this week include many examples of artistic flair. Peake class in Year 2 enjoyed showcasing their creative skills and produced some wonderful crowns to wear and Hopper class in Year 4 excelled with their creation of coronation coins!

Please do read the important notices pages that follow.

Enjoy your bank holiday weekend and we look forward to welcoming pupils back to school on Tuesday.

Lillington Nursery & Primary School.

Lillington Nursery and Primary School



Head Teacher to Home - 5 May IMPORTANT NOTICES



**NO SMOKING
NO VAPING**

We remind all parents and carers that Lillington nursery & Primary School is a no smoking or vaping site please. Including car parks and driveways. Thank you for your cooperation



More helpful information via the WHIZZ notice regarding smartwatches on [Page 15](#).

Children in Year 1 through to Year 6 have also taken home a useful leaflet about staying safe when using social media. Please remember many platforms have a minimum age of 13 years.

After School Club

Please remember to book your children into after school club. We will always cater for exceptional last minute emergencies, however, advance notice supports our planning and resourcing. Thank you.

Lillington Nursery and Primary School



Head Teacher to Home - 5 May IMPORTANT NOTICES

Uniform policy & Lost Property

Many items of uniform are being lost. Please ensure all items are clearly labelled with your child's name. Thank you.

Our uniform policy can be found on the school website. <https://www.lillingtonprimary.com/uniform/>

Term Dates

<https://www.lillingtonprimary.com/school-times-and-holiday-dates/>

Half term will be from Monday 29 May to Friday 2 June.
School reopens on Monday 5 June.

Summer Term ends on Friday 21 July.

Holiday Club

Please see attached information for a May Half Term activity club.

Local Services

Please see attached information detailing local services available.
including opening and access times.

Link to the Brunswick Hub Newsletter, <https://brunswickhlc.org.uk/april-june-news/> a copy of which is also attached.

Lillington Nursery and Primary School



Head Teacher to Home - 5 May What has happened in Franklin this week?

After a bit of “Big Help Out” - picking up litter from the school field, Franklin invited families to a Coronation Tea.



Lillington Nursery and Primary School



Head Teacher to Home - 5 May What has happened in Nursery this week?

Nursery have enjoyed a busy week going on a shape hunt and learning about the coronation!



Lillington Nursery and Primary School



Head Teacher to Home - 5 May What has happened in Bevan this week?

Reception have been learning all about the coronation this week and preparing for a celebration. They have made crowns and decorated cakes and biscuits. They have also made sandwiches ready for our party this afternoon. Thank you to everyone who has donated food to us.



Lillington Nursery and Primary School



Head Teacher to Home - 5 May What has happened in Darwin Class this week?

As our next writing focus will be around wishing tales Darwin have been thinking all about wishes and different ways to make a wish. We came up with a 'class wish' together, fingers crossed it will come true!



Lillington Nursery and Primary School



Head Teacher to Home - 5 May What has happened in Peake this week?

Peake enjoyed creating their coronation crowns to wear at their coronation breakfast and hosting parents and carers. Thank you to all of you who were able to attend and donated so generously.



Lillington Nursery and Primary School



Head Teacher to Home - 5 May What has happened in Drew Class this

Drew class have been developing the skills needed to create an accurate Roman mosaic. It was not as easy as it looked.



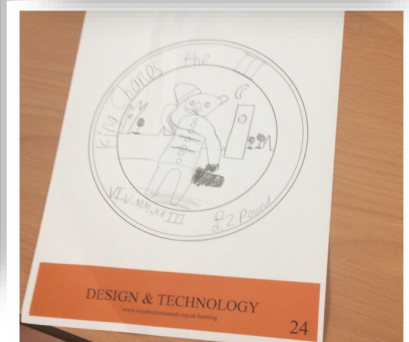
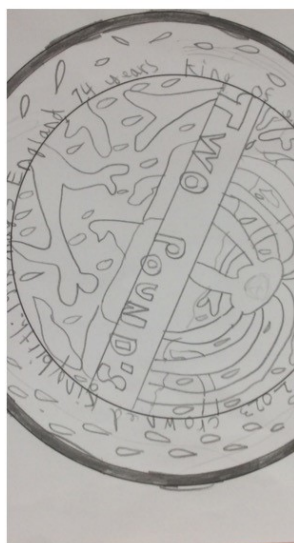
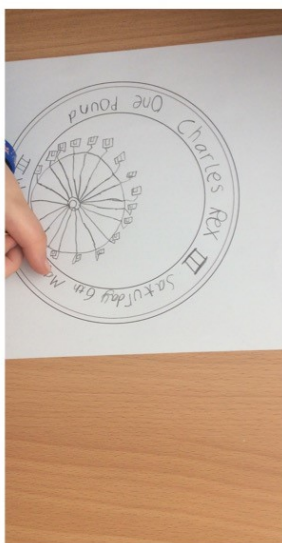
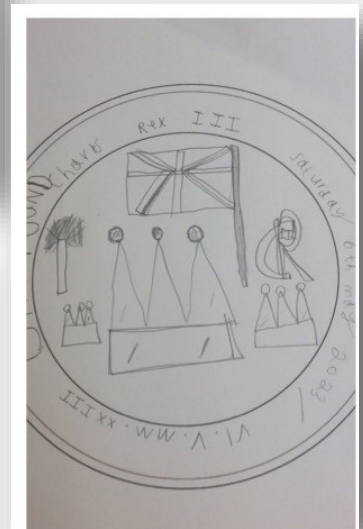
Lillington Nursery and Primary School



Head Teacher to Home - 5 May What has happened in Hopper this week?

Year 4 have been designing commemorative coins using an authentic Real Mint design brief.

We have themed this in the Kings coronation.

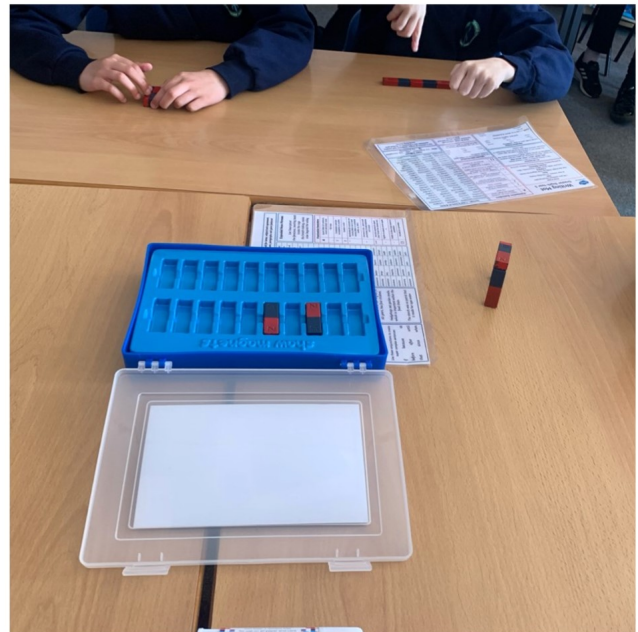


Lillington Nursery and Primary School



Head Teacher to Home - 5 May What has happened in Pankhurst this

Year 5 have been exploring of the properties of different materials and loved using the magnets to find out more about magnetism. We've also made the most of the sunshine and finished some writing outside.



Lillington Nursery and Primary School



Head Teacher to Home - 5 May What has happened in King Class this week?

King Class are ready for SATS week next week. They've all worked incredibly hard throughout the year and should be proud of the learning they've all done. Enjoy the long weekend, and we'll see you Tuesday ready to get stuck into the assessments.

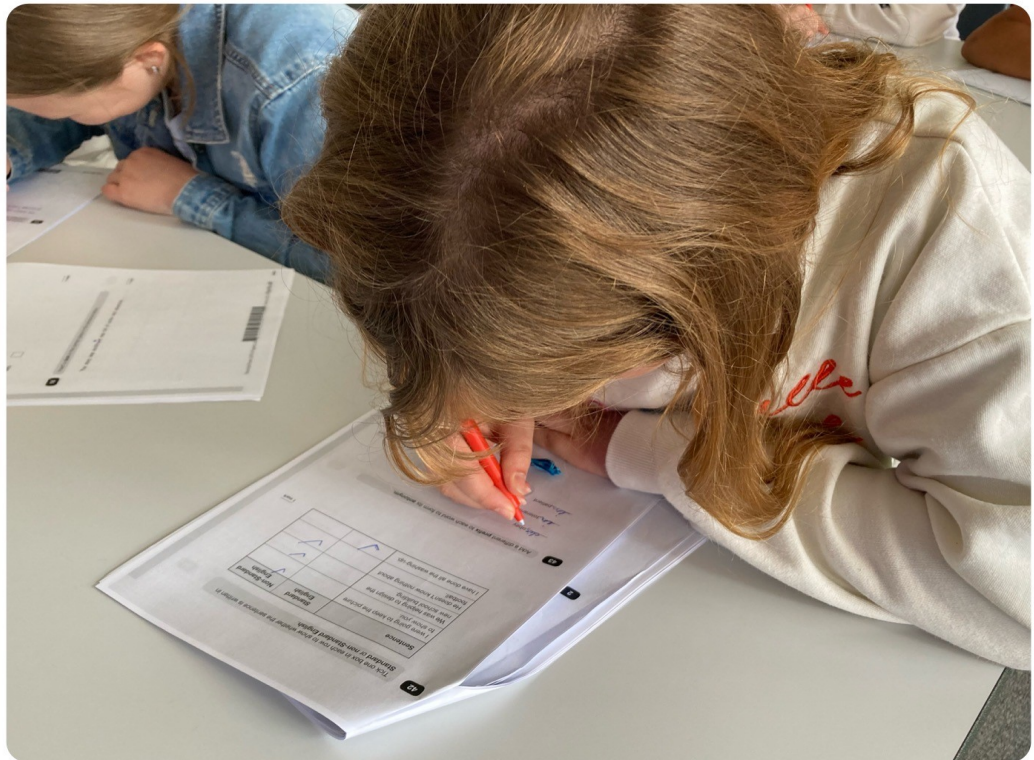


Lillington Nursery and Primary School



Head Teacher to Home –5 May What has happened in Angelou Class this week?

A massive well done to all the children in Angelou for their superb focus, resilience and motivation to preparing for next week's SATs. We could not have asked anymore from them and are all extremely proud of all they have achieved.

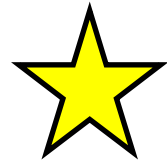


PIC•COLLAGE

Lillington Nursery and Primary School

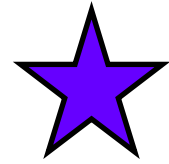


Head Teacher to Home - 5 May
What has happened in school this week?



CELEBRATION!

Congratulations to Bevan Class who had the highest attendance in Key Stage 1 this week!



Congratulations to King Class who had the highest attendance in Key Stage 2 this week!



10 top tips for safely using SMARTWATCHES

Kids love gadgets, and smartwatches – available to buy from as little as £20 online – make a tempting gift. As with any type of mobile technology, though, smartwatches can pose risks to children unless they're used safely. Receiving unwanted calls, cyber-stalking and distracting a young person when they're crossing the road are all known risks associated with smartwatches. However, these devices can bring plenty of benefits for children and parents alike – so let's examine the pros and cons of smartwatches.

AVOID CHEAP OPTIONS

A quick search online yields a torrent of cheap smartwatches for kids, costing as little as £20. It's wise to avoid this bargain basement tech: it tends to deliver a poor experience with inferior battery life, and it's hard to have faith in the software's safety. There have been cases of smartwatches being hacked to track or contact children; stick to known brands who have a reputation to protect.

CONTROL CALLING

Many smartwatches have the facility to make or take calls. As with a phone, you may want to restrict who your child can call – or be called by. On Apple Watches, you can select trusted contacts who are allowed to ring your child, while other watches' controls vary hugely. Some need to connect to a linked phone for calls, so you may be able to block unknown contacts via that device instead.

BEWARE HIDDEN COSTS

For a smartwatch to allow calls independently (that is, without being connected to a phone via Bluetooth), it will need its own mobile data plan. This might take the form of a tiny SIM card that you slot into the watch – or an eSIM, where the physical card is replaced by software settings. Either way, this will incur an additional monthly cost that you'll need to factor into any buying decision.

ENABLE FAMILY SHARING

Apple Watches aren't cheap, but they do offer superb safety features – allowing parents to control calls, messages and emails on the device, as well as a location tracking system that can send alerts if kids wander beyond pre-set boundaries. Their SOS function enables children to contact emergency services instantly if they're in trouble, which simultaneously also alerts parents and carers.

MAKE THEM COOL FOR SCHOOL

Some schools have banned smartwatches, as pupils have been using them as substitute phones. If your child's school does permit them, some devices can be set to prevent distractions in class. For example, Apple's Schooltime feature turns their watches into ordinary time-keeping devices during school hours. The display changes in this mode, showing teachers that it isn't being used for other purposes.

TRACK ITS LOCATION

Both Apple and Android devices have apps which allow you to track a smartwatch's location. They can also initiate an audio alert – avoiding those cushion-hurling panics when a treasured device can't be found at home. If you're planning to track your child's location via their watch, make them aware of that in advance. You could even make it a condition of them getting the watch in the first place.

THINK 'SAFETY FIRST'

Smartwatches are often worth hundreds of pounds, which can make young people wearing one a target for thieves. Advise your child to keep the watch hidden in public (when possible) and not to resist if muggers demand their watch. If you manage to track a stolen device, pass that information to the police: location data isn't always accurate, so you could end up wrongly accusing someone.

STORE MEDICAL INFO

Devices including the Samsung Galaxy Watch and Apple Watch can store the owner's medical details (such as their blood group and any pre-existing medical conditions), potentially giving emergency services access to vital information in a crisis. These devices also have 'hard fall' detection, which sends a text message to selected contacts along with a map showing the wearer's location.

USE THEM AS MOTIVATION

If you're worried your child's spending too much time slumped on the sofa staring at screens, smartwatches are great fitness trackers and can be a powerful incentive to get moving. Some devices will alert the wearer if they've been inactive for a long time and encourage them to do some exercise. Many watches record the user's daily step count and measure other health metrics.

BE MINDFUL OF BEDTIME

Many smartwatches offer sleep tracking, which some (usually older) children use to justify wearing them to bed. However, that also presents a temptation to message friends or check social media late at night, even if their phone is downstairs. Unless there's a valid reason not to, you could encourage your child to remove the watch in the evenings and ensure the charger stays in a different room.

Meet Our Expert

Barry Collins has been a technology journalist and editor for more than 20 years, working for titles such as the *Sunday Times*, *Which?*, *PC Pro* and *Computeractive*. He's appeared regularly as a technology pundit on television and radio, including on BBC Newsnight, Radio 5 Live and the ITV News at Ten. He has two children and writes regularly about internet safety issues.



NOS
National
Online
Safety®
#WakeUpWednesday

Lillington Nursery and Primary School

News from PTFA—5 May

Could you be the PTFA's new Treasurer or Deputy Chair?

We have vacancies for both and would love to have new people join the Committee and help decide what we do to support the pupils and school. You don't have to be a maths whizz or an accountant to be the Treasurer. The ability to keep records of our income and spending is what's most important. You also don't need to be a parent! The roles are open to carers and other family members so if you know someone who might be up for it, please let them know! If you're interested in either role or want to know more, please speak to either Lucy or Olivia in the playground or contact Lucy at either maysielu@hotmail.com or 07514086673.

Play our school lottery and you are in with a chance to win this amazing prize! Tickets are only £1 and can be bought here:

<https://www.yourschoollottery.co.uk/lottery/school/lillington-school-ptfa>



A promotional card for the school lottery. At the top, logos for Rilton Towers, Lillington Primary School, SEA LIFE, and LEGOLAND PLUS MORE... are displayed. The main text reads: "WIN! A MERLIN SILVER PASS FOR 4", "£25,000 PRIZE • £1 PER TICKET". Below this, there are two circular images: one showing a colorful playground with a castle-like structure, and another showing a large fish swimming underwater. The bottom left corner features the "YOUR SCHOOL LOTTERY" logo.



A poster for the "PUB IN THE PARK" event. The central text reads "PUB IN THE PARK" in large white letters on a black background, with "LEAMINGTON SPA" in a blue circle to the right. Below this, it says "VICTORIA PARK | 30 JUNE-2 JULY". The lineup includes "Ronan Keating • Bananarama • Soul II Soul Soundsystem • Toploader". It is "HOSTED BY Simon Rimmer, Lisa Goodwin-Allen & Si King from The Hairy Bikers". At the bottom, it says "TICKETS ON SALE NOW" and "PUBINTHEPARKUK.COM". The poster is decorated with various images of food, drinks, and people.

The PTFA summer fete is on Saturday 23rd June and we've already got our first raffle prize! A huge thank you to Pub in the Park who have donated a family ticket for the Sunday at this year's festival at Victoria Park.

Lillington Nursery and Primary School



Head Teacher to Home - 5 May
We are week Three when we
return on Tuesday 9 May



Educaterers Lunch Menu Week 3

Coventry and Warwickshire: 27/3, 17/4, 8/5, 19/6 and 10/7
 Leicestershire: 27/3, 17/4, 8/5, 19/6, 10/7
 Oxfordshire: 27/3, 17/4, 8/5, 19/6 and 10/7

Monday



Pork Meatballs SB, SU

or



(vg) Sticky BBQ Quorn Fillet G.

or



(v) Cheese/Beans D

or



(v) Cheddar Cheese G.D.

Tuesday



Chicken Korma Curry D.

or



(v) Cheese & Tomato Pizza G.D.

or



(v) Cheese D.

or



Tuna Mayonnaise F.E.G.

Wednesday



Roast Beef in Gravy, York Pud D.E.G.

or



(v) Veggie Toad in the Hole D.E.G.

or



Tuna Mayonnaise F.E.

or



British Roast Chicken G.

Thursday



Chicken Pie G.

or



(vg) Breaded Vegetable Fingers G.

or



British Ham G.

Friday



Breaded Fish Fillet Fingers F.

or



(v) Veggie Hot Dog G.

or



Egg Mayonnaise G.E.

Jacket Potatoes Every Day

Week 3 Dessert Menu

Every day we offer:

(v) Yoghurt, (D.)
 or fresh fruit as alternative dessert options

Monday

(vg) Homemade Chocolate Cracknel

Tuesday

(v) Swirly Strawberry Mousse D.
 (vg) Homemade Orange Cookie G.

Wednesday

(v) Homemade Fruit Crumble G.
 with Custard D.

Thursday

(vg) Homemade Flapjack G.
 with Fruit Wedges

Friday

(v) Dinky Donuts G.S.B.D.E.
 with Chocolate Sauce SB.
 (v) Ice Cream Tub D.

All our meals include a carbohydrate accompaniment, seasonal vegetables and/or salad. We offer a choice of fruit juice cordial, semi skimmed milk or water to drink. Some schools offer a Hydration Station instead, comprising of unlimited chilled water flavoured with fresh fruit.

Accompaniments may vary to those shown.

PLEASE NOTE some schools serve the cold option in a deli bag with vegetable sticks or salad, a dessert and a drink

Key

vg = vegan
 V = vegetarian
 D = Dairy
 N = Coconut / Nuts
 S = Sesame
 E = Egg
 G = Gluten/wheat
 F = Fish
 M = Mustard
 SB = Soya
 SU = Sulphites

www.educaterers.co.uk

Menu may change to meet customer preferences.

Email: contactus@educaterers.co.uk

educaterers A FOOD STORY

Allergies

Please contact your school cook for information regarding the content of dishes and products on our menu.

our menus | Educaterers

Lillington Nursery and Primary School



Thank you for reading our newsletter and taking a note of the important information and dates.

Have an enjoyable Coronation Weekend.
We look forward to welcoming you all back on
Tuesday 9 May.



A final heartfelt thank you to all of our families for helping the children's Coronation celebrations go so well.

They have thoroughly enjoyed themselves.