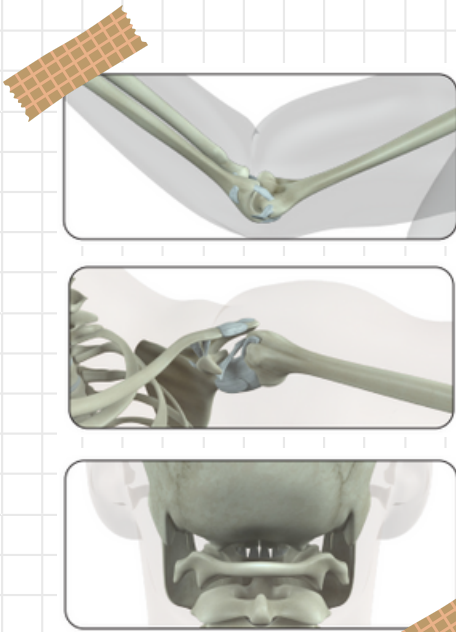
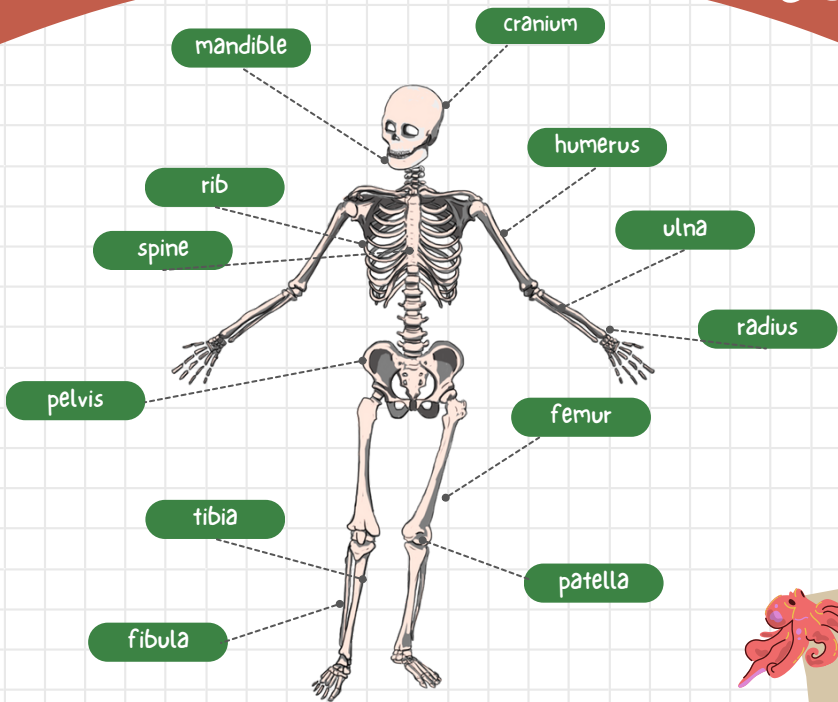


Animal Nutrition and the Skeletal System

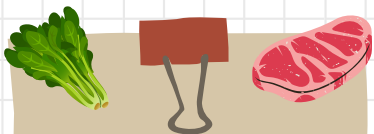


Joints

What is a hinge joint?
A joint that can open and close in one direction only.

What is a ball and socket joint?
A joint that allows movement in all directions.

What is a pivot joint?
A joint that only allows limited rotating movements.



What are herbivores, omnivores and carnivores?

Animals can be carnivores that eat meat, herbivores that eat plant parts, or omnivores that eat both meat and plant parts.



What is the difference between an exoskeleton and an endoskeleton?

An endoskeleton is found inside all vertebrates. It grows with the body and offers no protection to the outside of the body.

An exoskeleton is found outside the body of invertebrates. It offers protection for soft body parts but does not grow with the animal.

What is malnutrition?

Malnutrition, meaning poor nutrition, can cause health problems. Some humans do not eat a healthy, balanced diet. They either eat too much food, too little food or the wrong types of food.

invertebrate	An animal without a spine.
nutrient	Something that plants and animals need to grow, live and stay healthy.
vertebrae	One of the small bones that form the spine.
vertebrate	An animal with a spine.